



REGIONAL SPECIALISED METEOROLOGICAL CENTRE-TROPICAL CYCLONES, NEW DELHI  
TROPICAL CYCLONE ADVISORY BULLETIN NO. 20

FROM: RSMC –TROPICAL CYCLONES, NEW DELHI

TO: STORM WARNING CENTRE, NAYPYI TAW (MYANMAR)  
STORM WARNING CENTRE, BANGKOK (THAILAND)  
STORM WARNING CENTRE, COLOMBO (SRILANKA)  
STORM WARNING CENTRE, DHAKA (BANGLADESH)  
STORM WARNING CENTRE, KARACHI (PAKISTAN)  
METEOROLOGICAL OFFICE, MALE (MALDIVES)  
OMAN METEOROLOGICAL DEPARTMENT, MUSCAT (THROUGH RTH JEDDAH)  
YEMEN METEOROLOGICAL SERVICES, REPUBLIC OF YEMEN (THROUGH RTH JEDDAH)  
NATIONAL CENTRE FOR METEOROLOGY, UAE (THROUGH RTH JEDDAH)  
PRESIDENCY OF METEOROLOGY AND ENVIRONMENT, SAUDI ARABIA (THROUGH RTH JEDDAH)  
IRAN METEOROLOGICAL ORGANISATION, (THROUGH RTH JEDDAH)  
QATAR METEOROLOGICAL DEPARTMENT (THROUGH RTH JEDDAH)

TROPICAL CYCLONE ADVISORY NO. 20 FOR NORTH INDIAN OCEAN (THE BAY OF BENGAL AND ARABIAN SEA) VALID FOR NEXT 120 HOURS ISSUED AT 1230 UTC OF 26.05.2021 BASED ON 0900 UTC OF 26.05.2021.

SUB: VERY SEVERE CYCLONIC STORM 'YAAS' (PRONOUNCED AS 'YASS') OVER NORTHWEST BAY OF BENGAL, WEAKENED INTO A SEVERE CYCLONIC STORM OVER NORTHEAST ODISHA.

THE VERY SEVERE CYCLONIC STORM 'YAAS' (PRONOUNCED AS 'YASS') OVER NORTH COASTAL ODISHA MOVED NORTH-NORTHWESTWARDS WITH A SPEED OF ABOUT 10 KMPH DURING PAST 6 HOURS, WEAKENED INTO A **SEVERE CYCLONIC STORM** AND LAY CENTRED AT 0900 UTC OF TODAY, THE 26<sup>TH</sup> MAY, 2021 OVER NORTHEAST ODISHA, NEAR LATITUDE 21.6°N AND LONGITUDE 86.7°E, ABOUT 25 KM WEST-NORTHWEST OF BALASORE (42895).

THE SYSTEM IS VERY LIKELY TO MOVE NORTHWESTWARDS AND WEAKEN INTO A CYCLONIC STORM DURING NEXT 3 HOURS.

FORECAST TRACK AND INTENSITY ARE GIVEN IN THE FOLLOWING TABLE:

DATE/TIME(UTC)	POSITION LAT. °N/ LONG. °E	MAXIMUM SUSTAINED SURFACE WIND SPEED (KMPH)	CATEGORY OF CYCLONIC DISTURBANCE
26.05.21/0900	21.6/86.7	90-100 GUSTING TO 110	SEVERE CYCLONIC STORM
26.05.21/1200	21.8/86.5	60-70 GUSTING TO 80	CYCLONIC STORM
26.05.21/1800	22.3 /86.1	55-65 GUSTING TO 75	DEEP DEPRESSION
27.05.21/0000	22.8/85.7	35-45 GUSTING TO 55	DEPRESSION

THE MAXIMUM SUSTAINED WIND SPEED IS 50 KNOTS GUSTING TO 60 KNOTS AROUND SYSTEM CENTRE. SEA CONDITION IS VERY HIGH TO PHENOMENAL. THE ESTIMATED CENTRAL PRESSURE IS 978 HPA. MAXIMUM WINDS ARE OBSERVED IN THE NORTHEAST & SOUTHEAST SECTOR WITH LARGE AREAL EXTENSION.

AS PER SATELLITE IMAGERY BASED ON 0900 UTC OF THE 26<sup>TH</sup> MAY, INTENSE CONVECTIVE CLOUD MASS LIES IN NORTH ODISHA, JHARKHAND AND CHATTISGAHR.

(RK JENAMANI)

SCIENTIST-F RSMC NEWDELHI

PROBABILITY OF CYCLOGENESIS (FORMATION OF DEPRESSION)

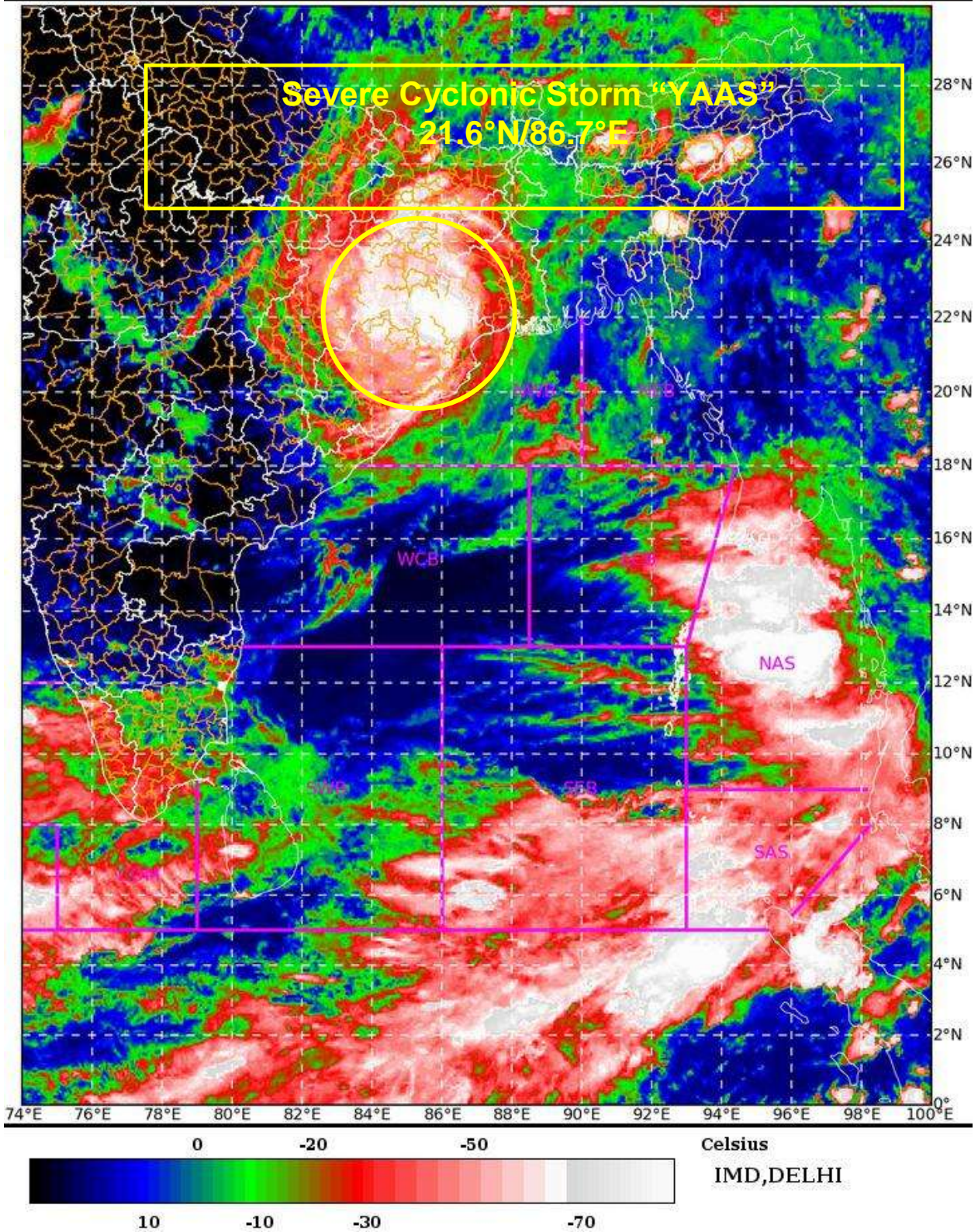
NIL: 0%, LOW: 1-25%, FAIR: 26-50%, MODERATE: 51-75% AND HIGH: 76-100%



SAT : INSAT-3D IMG 26-05-2021/(1030 to 1056) GMT

IMG\_TIR1\_TEMP 10.8 um 26-05-2021/(1600 to 1626) IST

L1C Mercator



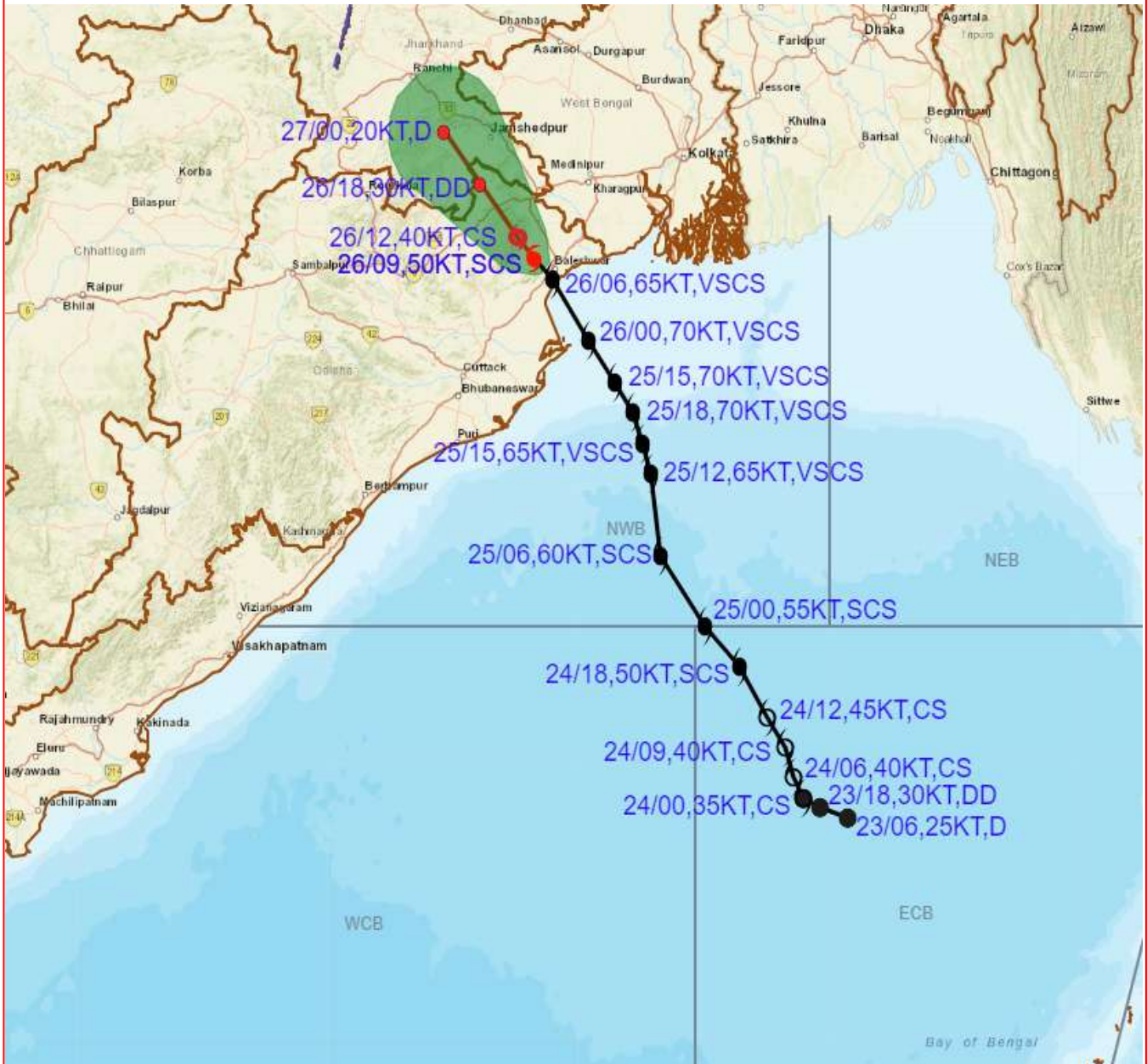
**PROBABILITY OF CYCLOGENESIS (FORMATION OF DEPRESSION)**

**NIL: 0%, LOW: 1-25%, FAIR: 26-50%, MODERATE: 51-75% AND HIGH: 76-100%**





# OBSERVED AND FORECAST TRACK ALONGWITH CONE OF UNCERTAINTY OF SEVERE CYCLONIC STORM "YAAS" OVER NORTHEAST ODISHA BASED ON 0900 UTC OF 26th MAY 2021



**DATE/TIME IN UTC**  
**IST=UTC + 0530**  
**L: LOW PRESSURE AREA**  
**WML: WELL MARKED LOW PRESSURE AREA**  
**D: DEPRESSION (17-27 KT)**  
**DD: DEEP DEPRESSION (28-33 KT)**  
**CS: CYCLONIC STORM (34-47 KT)**  
**SCS: SEVERE CYCLONIC STORM (48-63KT)**  
**VSCS: VERY SEVERE CYCLONIC STORM (64-89 KT)**  
**ESCS: EXTREMELY SEVERE CYCLONIC STORM (90-119 KT)**  
**SuCS: SUPER CYCLONIC STORM ( $\geq$  120 KT)**

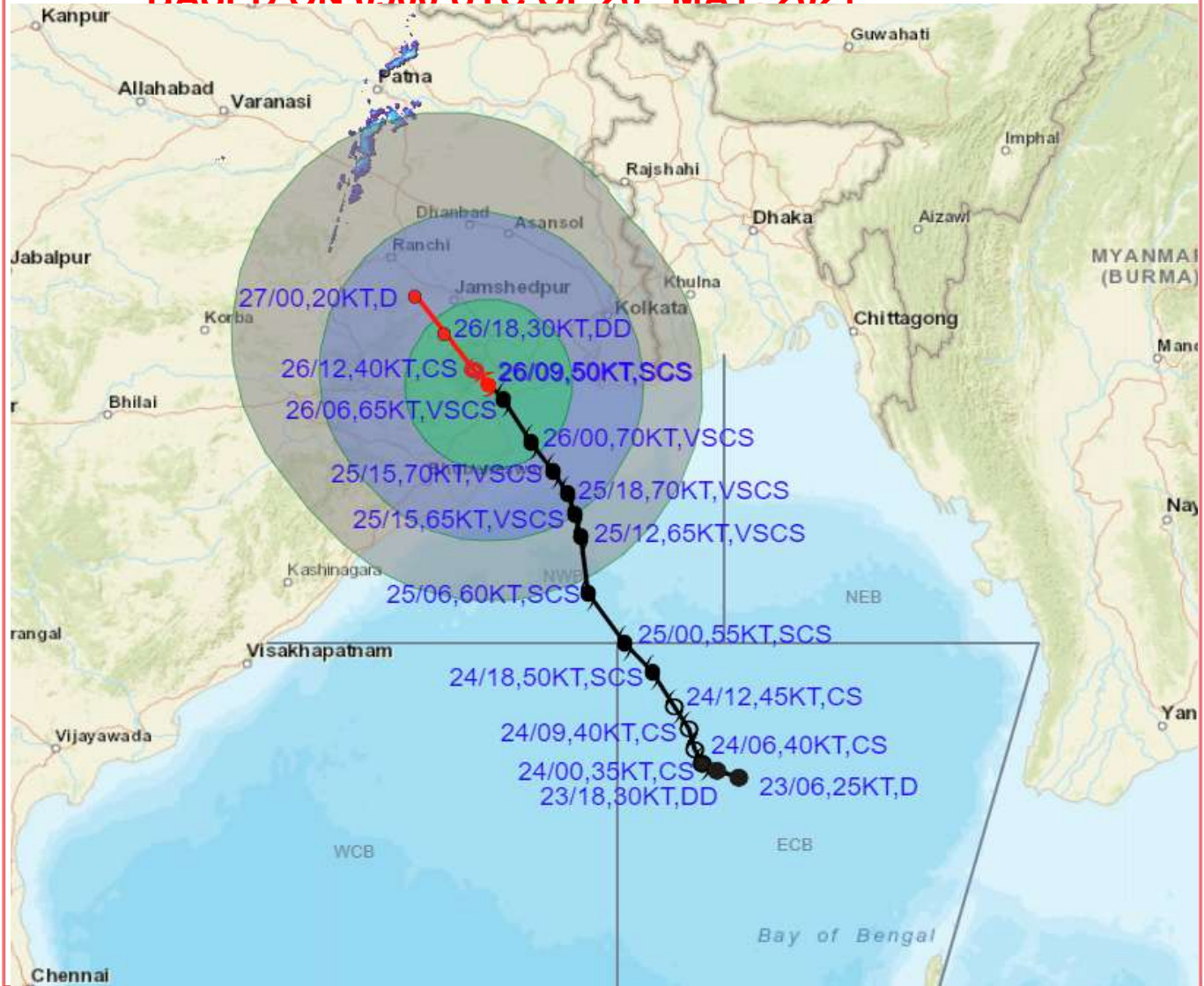
- LESS THAN 34 KT
- 34-47 KT
- $\geq$  48 KT
- OBSERVED TRACK
- FORECAST TRACK
- CONE OF UNCERTAINTY

### PROBABILITY OF CYCLOGENESIS (FORMATION OF DEPRESSION)

NIL: 0%, LOW: 1-25%, FAIR: 26-50%, MODERATE: 51-75% AND HIGH: 76-100%



# OBSERVED AND FORECAST TRACK ALONGWITH QUADRANT WIND DISTRIBUTION OF SEVERE CYCLONIC STORM "YAAS" OVER NORTHEAST ODISHA BASED ON 0900 UTC OF 26<sup>th</sup> MAY 2021



**DATE/TIME IN UTC**  
 IST=UTC + 0530  
**L:** LOW PRESSURE AREA  
**WML:** WELL MARKED LOW PRESSURE AREA  
**D:** DEPRESSION (17-27 KT)  
**DD:** DEEP DEPRESSION (28-33 KT)  
**CS:** CYCLONIC STORM (34-47 KT)  
**SCS:** SEVERE CYCLONIC STORM (48-63KT)  
**VSCS:** VERY SEVERE CYCLONIC STORM (64-89 KT)  
**ESCS:** EXTREMELY SEVERE CYCLONIC STORM (90-119 KT)  
**SuCS:** SUPER CYCLONIC STORM ( $\geq$  120 KT)

- LESS THAN 34 KT
- 34-47 KT
- $\geq$  48 KT
- OBSERVED TRACK
- FORECAST TRACK
- ▲ CONE OF UNCERTAINTY
- AREA OF MAXIMUM SUSTAINED WIND SPEED:
- 28-33 KT (52-61 KMPH)
- 34-49 KT (62-91 KMPH)
- 50-63 KT (92-117 KMPH)
- $\geq$  64 KT ( $\geq$ 118 KMPH)

### IMPACT OVER THE SEA

MSW (knot/kmph)	Impact	Action
28-33 (52-61)	Very rough seas	Total suspension of fishing operations
34-49 (62-91)	High to very high seas	Total suspension of fishing operations
50-63 (92-117)	Very high seas	Total suspension of fishing operations
$\geq$ 64 ( $\geq$ 118)	Phenomenal	Total suspension of fishing operations

### PROBABILITY OF CYCLOGENESIS (FORMATION OF DEPRESSION)

NIL: 0%, LOW: 1-25%, FAIR: 26-50%, MODERATE: 51-75% AND HIGH: 76-100%